

28
years
of milestone



Land Trades **ALTURA**

Bendoorwell, Mangaluru

CRISIL
An S&P Global Company

**Great Place
To
Work.**


**MFAR
CONSTRUCTIONS**

Get ready for your journey to
**an internationally
designed lifestyle**

PASSENGER NAME YOU

DATE TO BE ANNOUNCED

FROM ORDINARY LIVING

TO LAND TRADES LIVING

TIME COMING SOON

| FLIGHT | GATE | SEAT |
|--------|---------|--------|
| I124 | BENDOOR | LUXURY |

PASSENGER YOU

FROM ORDINARY LIVING

TO LAND TRADES LIVING

FLIGHT I124 **ORL → LTL**

**3 & 4 Bed
Residences**
Arriving soon at Bendoorwell

CREDAI
MANGALORE



ABOVE ALL | LOCATION

The neighbourhood of Bendoorwell has a distinctive character that sets it apart. On one hand, it retains its historical charm, while on the other hand, it keeps up with Mangaluru's fast-paced march towards a brighter tomorrow. Altura is located in the heart of this much sought-after locality in Lower Bendoor.



ABOVE ALL | LUXURY

Sea View: Altura apartments will offer view of Mangaluru's deep natural harbour to the East or the blue expanse of Arabian Sea to the West, and in some cases, both.

Green View: Tree-lined streets of picturesque low-rise residential structures provide warm views of greenery in every direction for each Altura apartment.



A NEW ADDRESS A NEW PERSPECTIVE

Bendoorwell is at the cusp of modernity and heritage. The area of historic neighbourhoods with landmarks like the St Sebastain church surrounded by quaint by lanes. At the centre of it all will be Altura , a landmark of luxury living that is all set to redefine the horizon of Mangaluru.

Located in the heart of Bendoorwell , Land Trades Altura offers . Its residents the best of both worlds. A state-of-the-art lifestyle, replete with the finest luxuries and an unrivalled location that is well connected to the roots of the city. Altura consists of luxurious 3, 4 BHK apartments that offer spectacular views of the harbour, the bay, the greenery of the valley view and Mangaluru's enchanting cityscape. Altura is more than just a home — it's a whole new perspective.



A WELL-APPOINTED WORLD

Beyond the international fixtures, and top-of-the-line amenities in each individual apartment, residents of Altura will have access to a whole host of facilities for fitness, entertainment and relaxation. An apartment at Altura is as much a lifestyle as a home.



Gymnasium View : Beyond the international fixtures, and top-of-the-line amenities in each individual apartment, residents of Altura will have access to a whole host of facilities for fitness, entertainment and relaxation. An apartment at Altura is as much a lifestyle as a home.










YOUR PERSONAL OBSERVATORY

Every apartment in Land Trades Altura offers at least two distinct views, of the sea and harbour, of Mangaluru's iconic skyline, or the lush green landscape that surrounds this premium property.

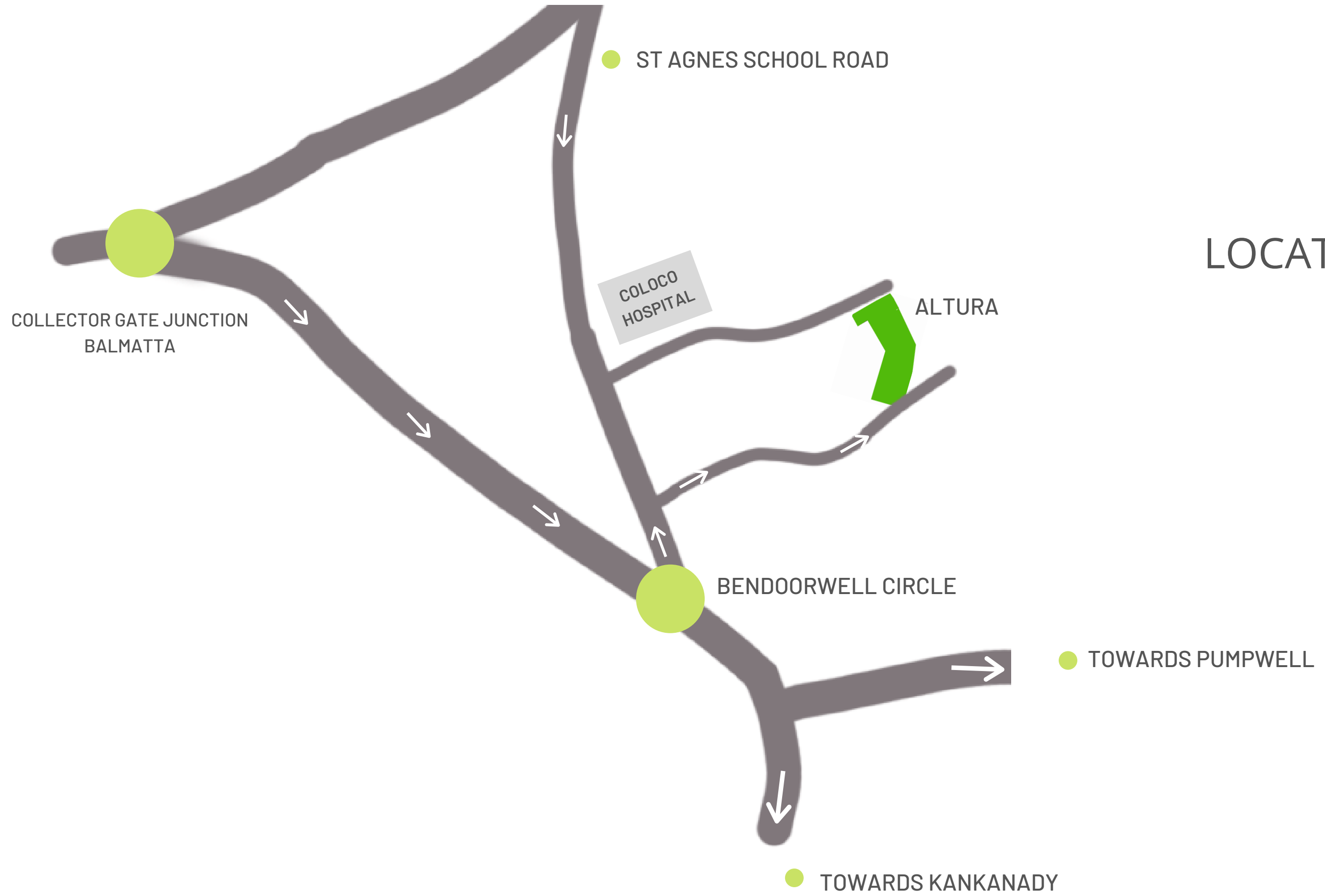
Balcony View : From the heights of Altura, residents have stunning views of the city's pulsing Sea view to the West and Green Valley to the East.

A LEISURELY OUTDOOR LIFESTYLE

-  Outdoor Pool
-  Separate Kids Pool
-  State-of-art Clubhouse
-  Fully equipped gym
-  Childrens play area
-  Jacuzzi and Sauna
-  Vistor's Lobby



Pool View: Swimming pool features gorgeous views that will bring residents in close contact with the natural world around them. The amenities at Altura continue well into the lush, natural world. An annex adjacent to the clubhouse will offer space for 50 - 75 guests, while a variety of outdoor facilities will allow residents of Altura to enjoy the complex's serene natural surroundings.



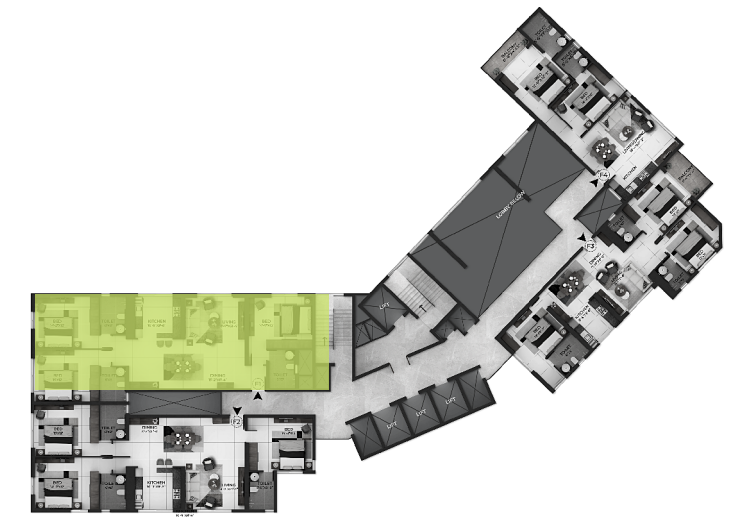
LOCATION MAP



- ① 3 BHK Units 1885.00Sq.ft
- ② 3 BHK Units 1831.00 Sq.ft
- ③ 3 BHK Units 1484.00 Sq.ft
- ④ 2 BHK Units 1123.00 Sq.ft

KEY PLAN - 3rd FLOOR

Disclaimer: The information depicted herein viz, master plans, floor plans, furniture layout, fittings, illustrations, specifications, designs, dimensions, rendered views, colours, amenities and facilities are subject to change without notification as may be required by the relevant authorities or the developer's architect, and cannot form part of an offer or contract. Whilst every care is taken in providing this information, the developer cannot be held liable for variations. All illustrations and pictures are artist's impressions only. The information is subject to variations, additions, deletions, substitutions and modifications as may be recommended by the company's architect and/or the relevant approving authorities. The developer is wholly exempt from any liability on account of claim in this regard.(1 Square mtr = 10.764 Square feet)



KEY PLAN



3 BEDROOM UNIT

3 BEDROOMS + 3 BATHROOMS | 1885 Sq.ft

Disclaimer: The information depicted herein viz, master plans, floor plans, furniture layout, fittings, illustrations, specifications, designs, dimensions, rendered views, colours, amenities and facilities are subject to change without notification as may be required by the relevant authorities or the developer's architect, and cannot form part of an offer or contract. Whilst every care is taken in providing this information, the developer cannot be held liable for variations. All illustrations and pictures are artist's impressions only. The information is subject to variations, additions, deletions, substitutions and modifications as may be recommended by the company's architect and/or the relevant approving authorities. The developer is wholly exempt from any liability on account of claim in this regard.(1 Square mtr = 10.764 Square feet)



KEY PLAN



3 BEDROOM UNIT

3 BEDROOMS + 3 BATHROOMS | 1831 Sq.ft

Disclaimer: The information depicted herein viz, master plans, floor plans, furniture layout, fittings, illustrations, specifications, designs, dimensions, rendered views, colours, amenities and facilities are subject to change without notification as may be required by the relevant authorities or the developer's architect, and cannot form part of an offer or contract. Whilst every care is taken in providing this information, the developer cannot be held liable for variations. All illustrations and pictures are artist's impressions only. The information is subject to variations, additions, deletions, substitutions and modifications as may be recommended by the company's architect and/or the relevant approving authorities. The developer is wholly exempt from any liability on account of claim in this regard.(1 Square mtr = 10.764 Square feet)



KEY PLAN



3 BEDROOM UNIT

3 BEDROOMS + 3 BATHROOMS | 1484 Sq.ft

Disclaimer: The information depicted herein viz, master plans, floor plans, furniture layout, fittings, illustrations, specifications, designs, dimensions, rendered views, colours, amenities and facilities are subject to change without notification as may be required by the relevant authorities or the developer's architect, and cannot form part of an offer or contract. Whilst every care is taken in providing this information, the developer cannot be held liable for variations. All illustrations and pictures are artist's impressions only. The information is subject to variations, additions, deletions, substitutions and modifications as may be recommended by the company's architect and/or the relevant approving authorities. The developer is wholly exempt from any liability on account of claim in this regard.(1 Square mtr = 10.764 Square feet)



KEY PLAN



2 BEDROOM UNIT

2 BEDROOMS + 2 BATHROOMS | 1123 Sq.ft

Disclaimer: The information depicted herein viz, master plans, floor plans, furniture layout, fittings, illustrations, specifications, designs, dimensions, rendered views, colours, amenities and facilities are subject to change without notification as may be required by the relevant authorities or the developer's architect, and cannot form part of an offer or contract. Whilst every care is taken in providing this information, the developer cannot be held liable for variations. All illustrations and pictures are artist's impressions only. The information is subject to variations, additions, deletions, substitutions and modifications as may be recommended by the company's architect and/or the relevant approving authorities. The developer is wholly exempt from any liability on account of claim in this regard.(1 Square mtr = 10.764 Square feet)



- ① 3 BHK Units 2132.00 Sq.ft
- ② 3 BHK Units 2079.00 Sq.ft
- ③ 3 BHK Units 1612.00 Sq.ft
- ④ 4 BHK Units 2645.00 Sq.ft

KEY PLAN - 4th to 30th FLOOR

Disclaimer: The information depicted herein viz, master plans, floor plans, furniture layout, fittings, illustrations, specifications, designs, dimensions, rendered views, colours, amenities and facilities are subject to change without notification as may be required by the relevant authorities or the developer's architect, and cannot form part of an offer or contract. Whilst every care is taken in providing this information, the developer cannot be held liable for variations. All illustrations and pictures are artist's impressions only. The information is subject to variations, additions, deletions, substitutions and modifications as may be recommended by the company's architect and/or the relevant approving authorities. The developer is wholly exempt from any liability on account of claim in this regard.(1 Square mtr = 10.764 Square feet)



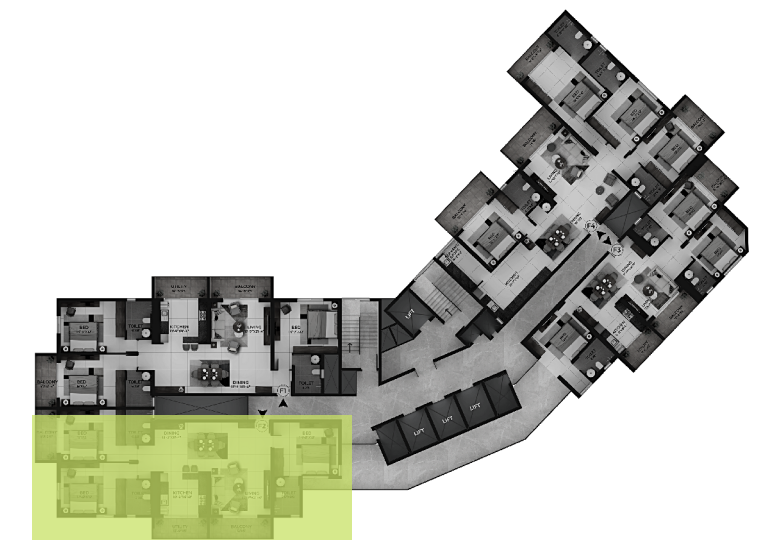
KEY PLAN



3 BEDROOM UNIT

3 BEDROOMS + 3 BATHROOMS | 2132 Sq.ft

Disclaimer: The information depicted herein viz, master plans, floor plans, furniture layout, fittings, illustrations, specifications, designs, dimensions, rendered views, colours, amenities and facilities are subject to change without notification as may be required by the relevant authorities or the developer's architect, and cannot form part of an offer or contract. Whilst every care is taken in providing this information, the developer cannot be held liable for variations. All illustrations and pictures are artist's impressions only. The information is subject to variations, additions, deletions, substitutions and modifications as may be recommended by the company's architect and/or the relevant approving authorities. The developer is wholly exempt from any liability on account of claim in this regard.(1 Square mtr = 10.764 Square feet)



KEY PLAN



3 BEDROOM UNIT

3 BEDROOMS + 3 BATHROOMS | 2079 Sq.ft

Disclaimer: The information depicted herein viz, master plans, floor plans, furniture layout, fittings, illustrations, specifications, designs, dimensions, rendered views, colours, amenities and facilities are subject to change without notification as may be required by the relevant authorities or the developer's architect, and cannot form part of an offer or contract. Whilst every care is taken in providing this information, the developer cannot be held liable for variations. All illustrations and pictures are artist's impressions only. The information is subject to variations, additions, deletions, substitutions and modifications as may be recommended by the company's architect and/or the relevant approving authorities. The developer is wholly exempt from any liability on account of claim in this regard.(1 Square mtr = 10.764 Square feet)



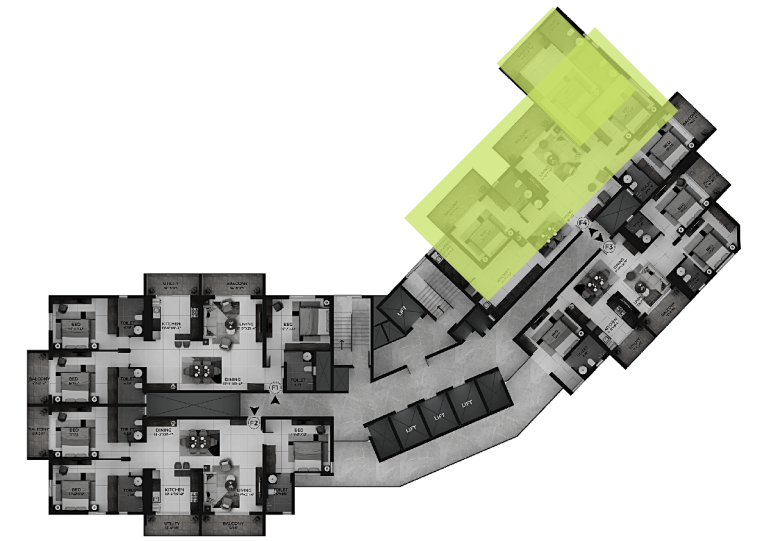
KEY PLAN



3 BEDROOM UNIT

3 BEDROOMS + 3 BATHROOMS | 1612 Sq.ft

Disclaimer: The information depicted herein viz, master plans, floor plans, furniture layout, fittings, illustrations, specifications, designs, dimensions, rendered views, colours, amenities and facilities are subject to change without notification as may be required by the relevant authorities or the developer's architect, and cannot form part of an offer or contract. Whilst every care is taken in providing this information, the developer cannot be held liable for variations. All illustrations and pictures are artist's impressions only. The information is subject to variations, additions, deletions, substitutions and modifications as may be recommended by the company's architect and/or the relevant approving authorities. The developer is wholly exempt from any liability on account of claim in this regard.(1 Square mtr = 10.764 Square feet)



KEY PLAN



4 BEDROOM UNIT

4 BEDROOMS + 4 BATHROOMS | 2645 Sq.ft

Disclaimer: The information depicted herein viz, master plans, floor plans, furniture layout, fittings, illustrations, specifications, designs, dimensions, rendered views, colours, amenities and facilities are subject to change without notification as may be required by the relevant authorities or the developer's architect, and cannot form part of an offer or contract. Whilst every care is taken in providing this information, the developer cannot be held liable for variations. All illustrations and pictures are artist's impressions only. The information is subject to variations, additions, deletions, substitutions and modifications as may be recommended by the company's architect and/or the relevant approving authorities. The developer is wholly exempt from any liability on account of claim in this regard.(1 Square mtr = 10.764 Square feet)

Land Trades Builders & Developers
5th Floor, Milestone 25, Collectors Gate
Balmatta, Mangaluru - 575003

91-824 2425424, 8882 777 444
www.landtrades.in

28
years
of milestone

